



# BEYOU

BE ENGAGED YOUR OWN UNIQUE WAY

**BEYOU** is all about making sure you can be the real you at school! This guide explores cultural behaviors, and highlights BEYOU moments for students like you to be their cultural and linguistic selves at school.

## DYNAMIC ATTENTION SPAN:

Showing focus in non-traditional ways

### What does it mean?

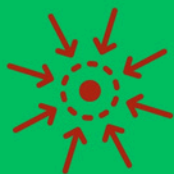
Dynamic attention span means there are different ways for showing you are focused or paying attention, and it can change depending on what is happening.

### Culturally Speaking:

How focus and attention are shown can be cultural. There are varied and non-traditional ways to show task orientation.

### BEYOU Moments

- Listening activities
- Independent work
- Reading and writing
- Discussions
- Free time/choice activities



### CLR Activities to BEYOU:

Answer Chairs  
Guess Who  
I Got This!  
Article or Video Doodle

## SUBJECTIVITY:

One thing can be many things!

### What does it mean?

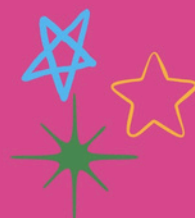
Subjectivity means there is more than one way to look at or do something. Not everything is either right or wrong, or yes or no. There is a lot in between! Not seeing things like everyone else is a good thing!

### Culturally Speaking:

The essential understanding of a topic or concept lies in the relativity and perspective, not just right and wrong.

### BEYOU Moments

- Class rules and norms
- Discussions
- Experiments
- Writing prompts
- Assessments



### CLR Activities to BEYOU:

\$2.00 Summary  
Campfire  
Yesterday's Headlines  
Personal Thesaurus

Check out the Cultural Behavior Tutorials for these cultural behaviors and more [here!](#)