



# A Year of Reflections on Your **Journey** to Cultural and Linguistic Responsiveness



CULTURALLY & LINGUISTICALLY RESPONSIVE

## An Invitation from Dr. Hollie

Dear CLR Educator,

You cannot be a CLR educator and not be reflective because they go hand in hand. To aid you in this process, this journal is a reflective guide for your journey in Cultural and Linguistic Responsiveness (CLR). There are more than 40 reflection prompts, essentially one for each week of the school year. The topic for each prompt can change, but they are all related to the multiple facets and nuances of what it means to be authentically CLR. It does not matter if you start reflecting in the middle of September or the end of March—the goal is to deepen your perspective, passion, and purpose for validating and affirming your students.

There are four types of prompts: shifting your mindset, building your skillset, loving yourself, and loving your community. You are welcome to start with any type and any prompt. Feel free to bounce around as you see fit or where your mood takes you. With that flexibility in mind, the prompts are chronologically and intentionally ordered, grounding your reflection and the questions that often arise during that time of year. The journal, like the traditional school year, begins in July and ends in June. (Note: I acknowledge that some schools are on a year-round calendar and trust that you will adjust whichever prompts you complete accordingly.)

While there is a prescribed structure, this journal is intended to be yours. Own it! Each prompt links to a blank page in the journal where you can reflect. Some prompts encourage a particular kind of reflection, but most should be done in the way that works best for you, whether that is fully developed paragraphs, thoughts noted in phrases, importing photos, using a drawing feature on your device, and more. Again, make this journal yours.

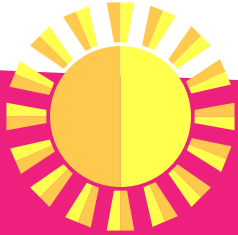
One last note: This journal assumes foundational knowledge about CLR based on the CLR professional learning series and/or available CLR resources. Educators who have not experienced the CLR professional learning series should go to [www.culturallyresponsive.org](http://www.culturallyresponsive.org) for more information.

Peace,

**Dr. H**

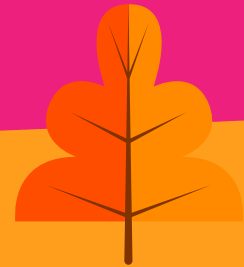
# TABLE OF CONTENT

Use the links below to go directly to the part of the journal where you are currently working.



## Summer into Fall

JULY - AUGUST - SEPTEMBER



## Fall into Winter

OCTOBER - NOVEMBER - DECEMBER



## Winter into Spring

JANUARY - FEBRUARY - MARCH



## Spring into Summer

APRIL - MAY - JUNE



# Summer into Fall

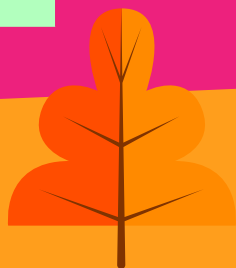
JULY - AUGUST - SEPTEMBER

Ideally, many of these prompts should be completed before your students arrive at school. The prompts meet you where you are and guide the start of your year in the CLR journey. They are intended to have you reflect inward before looking outward at your students.

Mindset	Skillset	Love Yourself	Love Your Community
As of this moment, where are you on your journey in "this work" (i.e., race, equity, social justice, activism, responsiveness)? How are you feeling about it? What have been your ups and downs? Where do you need to go next? How do you need to level up?	Take pictures of your room environment and put some of them here. How is your room De-Blumenbached, De-Commercialized, and De-Superficialized? What work do you still have work to do to ensure this is a CLR environment?	Find a picture of yourself as a first year educator and include it on this page. Ask your younger, less-experienced self, What is it that you know now that you wished you knew then about the work of race, equity, social justice, activism, and responsiveness?	While self-care is incredibly important, we often forget the value of community care. What and who do you consider your "community(ies)"? How does your community care for you? In what ways do you care for your community? Reflect on the notion of community care for the year ahead.
REFLECT HERE	REFLECT HERE	REFLECT HERE	REFLECT HERE
How attuned are you to your biased thinking? List any general biases you are currently holding and are willing to admit to yourself. Where do you think they originated/Through what filter did you learn them?	Invite a colleague to your room and ask for feedback about your room environment. What do they notice? What did they see that was validating and affirming in terms of the images, cultural artifacts, and/or the interior design of the room?	Free page! Reflect as you like: freewrite, photo collage, or anything that allows you to make meaningful connections to your emerging CLR-ness and loving and knowing yourself better.	Name something for which you have advocated at your school/district that has to do with equity/social justice. On a scale from 1 (not successful) to 10 (very successful), how successful were you? Why? Why not?
REFLECT HERE	REFLECT HERE	REFLECT HERE	REFLECT HERE
Go on a bias hunt. Challenge yourself. While in a store or airport or church, see how many "first thoughts, but not last thoughts" you have. Write two or three of them here using this frame: My first thought was: _____, my last thought is _____.	What is your plan for getting to know your students, culturally speaking? In what ways do you think this is a successful plan? What obstacles might you bump into and/or not get the information you're seeking? How might you handle these challenges?	Through this CLR journey, what have you learned or realized about yourself, so far, from a cultural perspective: What were you taught to value, believe, and how to behave from your own many rings of culture? What have you intentionally chosen to hold on to? What have you intentionally let go? What are you still working to figure out?	In what ways is your community(ies) vulnerable with one another? (NOT oversharing or disclosure, but real, true, honest, open). How might your community(ies) deepen in service to one another if folks were willing to be a bit more vulnerable?
REFLECT HERE	REFLECT HERE	REFLECT HERE	REFLECT HERE
When you look at your students' names on the rosters, class-by-class, what biases come up? What triggered you about some of the names? What were your "first thoughts"?	What is the core of your methodology? In your heart, are you more of a traditionalist, a responsive-ist, or a CLR-ist? In which area(s) do you need to grow?	How are you stretching yourself in this work of becoming more CLR? What obstacles have you encountered? In what ways are you proud of what you've done? What can you build upon for next steps?	How do you (or plan to) stretch your CLR muscles in community with others? How is your collective work meaningful? How could it deepen? What would it mean to your community if you could work deeply together in service to our students?
REFLECT HERE	REFLECT HERE	REFLECT HERE	REFLECT HERE

"This journey begins with you—the individual—and then works its way to the institution. Individuals change institutions. We have not had much success with institutions changing individuals, when it comes to this work."

- DR. HOLLIE





As of this moment, where are you on your journey in “this work”  
(i.e., race, equity, social justice, activism, and responsiveness)?  
How are you feeling about it? What have been your ups and downs?  
Where do you need to go next? How do you need to level up?



How attuned are you to your biased thinking? Can you list any general biases you are currently holding and willing to admit to yourself? Where do you think they originated/through what filter did you learn them?



Take pictures of your room environment and put some of them here. How is your room De-Blumenbached, De-Commercialized, and De-Superficialized? What work do you have to do to ensure this is a CLR environment?



Invite a colleague to your room and ask for feedback about your room environment. What do they notice? What did they see that was validating and affirming in terms of the images, cultural artifacts, and/or the interior design of the room?





Summer into Fall | JULY - AUGUST - SEPTEMBER

LOVE  
YOURSELF

Find a picture of yourself as a first year educator and include it on this page. Ask your younger, less-experienced self, What is it that you know now that you wished you knew then about the work of race, equity, social justice, activism, and responsiveness?



Summer into Fall | JULY - AUGUST - SEPTEMBER

LOVE  
YOURSELF

Free page! Reflect as you like:  
freewrite, photo collage, or anything that allows you to make meaningful connections to your emerging CLR-ness.



Summer into Fall | JULY - AUGUST - SEPTEMBER

LOVE YOUR  
COMMUNITY

While self-care is incredibly important, we often forget the value of community care. What and who do you consider your "community(ies)." How does your community care for you?

In what ways do you care for your community?

Reflect on the notion of community care for the year ahead.



©2023



Summer into Fall | JULY - AUGUST - SEPTEMBER

LOVE YOUR  
COMMUNITY

Name something for which you have advocated at your school/  
district that has to do with equity/social justice. On a scale from 1  
(not successful) to 10 (very successful), how successful were you?  
Why? Why not?